

Endostatin Antibody
Mouse Monoclonal Antibody
Catalog # ALS12175**Specification**

Endostatin Antibody - Product Information

Application	WB, IHC-P
Primary Accession	P39060
Reactivity	Human, Mouse, Rat
Host	Mouse
Clonality	Monoclonal
Calculated MW	178kDa KDa
Dilution	WB~~1:1000 IHC-P~~N/A

Endostatin Antibody - Additional Information**Gene ID** 80781**Other Names**

Collagen alpha-1(XVIII) chain, Endostatin, COL18A1

Target/Specificity

Recognizes mouse endostatin, Mr 22kD, an unidentified protein is also weakly detected, Mr 54kD. Detects human protein in IHC-FFPE. It is predicted that the antibody will also detect the rat protein. Cross-reactivity is predicted based on sequence ho ...

Reconstitution & Storage

Long term: -20°C; Short term: +4°C. Avoid repeat freeze-thaw cycles.

Precautions

Endostatin Antibody is for research use only and not for use in diagnostic or therapeutic procedures.

Endostatin Antibody - Protein Information**Name** COL18A1 ([HGNC:2195](#))**Function**

Probably plays a major role in determining the retinal structure as well as in the closure of the neural tube.

Cellular Location

Secreted, extracellular space, extracellular matrix. Secreted, extracellular space, extracellular matrix, basement membrane {ECO:0000250|UniProtKB:P39061} [Endostatin]: Secreted. Secreted, extracellular space, extracellular matrix, basement membrane

Tissue Location

Detected in placenta (at protein level) (PubMed:32337544). Present in multiple organs with highest levels in liver, lung and kidney.

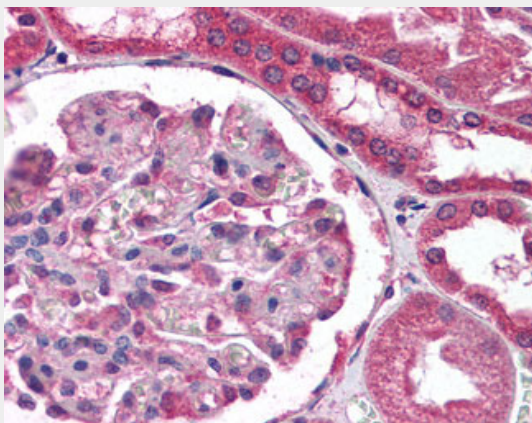
Volume

50 μ l

Endostatin Antibody - Protocols

Provided below are standard protocols that you may find useful for product applications.

- [Western Blot](#)
- [Blocking Peptides](#)
- [Dot Blot](#)
- [Immunohistochemistry](#)
- [Immunofluorescence](#)
- [Immunoprecipitation](#)
- [Flow Cytometry](#)
- [Cell Culture](#)

Endostatin Antibody - Images

Anti-COL18A1 / Endostatin antibody IHC of human kidney.

Endostatin Antibody - Background

COLA18A probably plays a major role in determining the retinal structure as well as in the closure of the neural tube.

Endostatin Antibody - References

Saarela J.,et al.Matrix Biol. 16:319-328(1998).
Elamaa H.,et al.Matrix Biol. 22:427-442(2003).
Hattori M.,et al.Nature 405:311-319(2000).
Oh S.P.,et al.Genomics 19:494-499(1994).
Feng Y.,et al.Sheng Wu Gong Cheng Xue Bao 17:278-282(2001).